



REVOLUTIONARY  
TECHNOLOGY MEETS  
REMARKABLE  
PERFORMANCE



HP LaserJet Managed  
MFPs and printers



# Uncompromising VISION

---

## Exceptional RESULTS

*HP LaserJet Managed MFPs and printers were developed specifically to address essential business printing needs—today and tomorrow.*



When we set out to create this line of LaserJet printers, we tasked our engineers and product teams with designing and developing printers that combined—without compromise—extraordinary design and user experience; exceptional print quality and reliability, even under the heaviest workloads; security that's unmatched in the industry; and extensibility features that allow them to adapt to and benefit from new technologies and new capabilities.

---





As the engineers, designers, and programmers progressed, they continuously validated their decisions against the most important metrics: real-world user expectations and business demands.

The result is an extraordinary portfolio that delivers brilliant, professional-quality prints at a remarkable price.







## PERFORMANCE

# From ideas to output

Performance tells the story. Whether you're printing five pages or fifty, color or black and white, HP LaserJet Managed MFPs and printers deliver the professional performance you'd expect from an enterprise machine.

- **Virtually eliminate warm-up time**  
These devices feature fusers that warm rapidly and cool quickly, so they start printing sooner, complete jobs faster, and help you conserve more energy.<sup>1</sup>
- **Spend less time on maintenance**  
These devices require significantly fewer replacement parts, and no manual cleaning of printer components is required to maintain print quality.<sup>2</sup> With HP Smart Device Services, proactive alerts ensure technicians know the right parts and exact procedures before service calls.
- **Get the best print quality automatically, right out of the box**  
There's no need to change driver settings or the control panel. HP LaserJets employ built-in proprietary image enhancement technologies that consistently render vibrant and sharp color prints, page after page. Plus, with HP Custom Color Manager, easily access high-quality color profiles—from the cloud—to support RGB and CMYK workflow color preference and meet brand standards or customization needs.
- **Minimize downtime**  
HP Smart Device Services remote diagnostics and remediation can help reduce delays in servicing. Original HP LaserJet High-Yield Cartridges can help you print more pages, more affordably.<sup>3</sup>

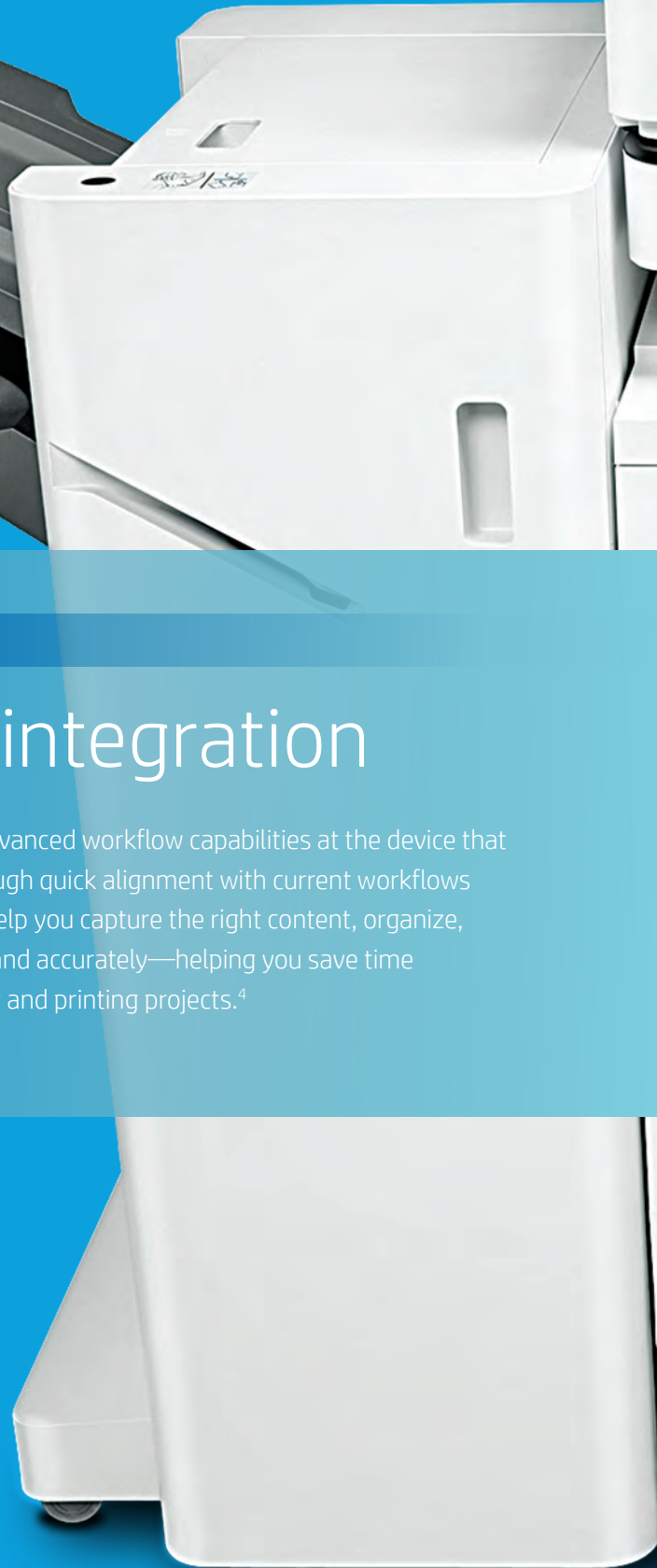
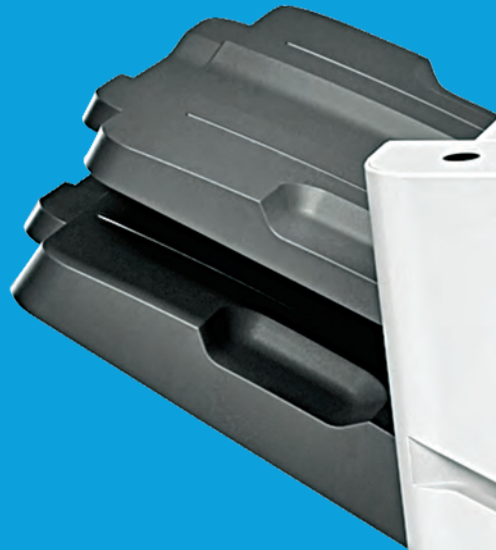
## DESIGN

# Purposeful and professional

Design is about more than aesthetics. Done with purpose, it connects form to function—promising performance and conveying confidence. In HP LaserJet Managed MFPs and printers, simple, intelligent design delivers functionality for today and adaptability for the future.

- Cutting-edge technologies minimize paper jams and faulty inputs.
- Modular feed and finishing accessories offer customizable configuration options.
- User-facing design expedites workflows and print services at the device.
- Efficient scanning, copying, and document digitization at the device save time and resources.
- Touchscreen controls and a pull-out keyboard allow for seamless monitoring, editing, and updating of works in progress.





## WORKFLOW

# Effortless integration

HP LaserJet Flow MFPs offer advanced workflow capabilities at the device that optimize your productivity through quick alignment with current workflows and demands. Flow solutions help you capture the right content, organize, and distribute it quickly, easily, and accurately—helping you save time and effort on complex scanning and printing projects.<sup>4</sup>





#### Auto-orientation, auto-page crop, and auto-tone

Advanced document management features simplify production and perfect the contrast, brightness, and background removal of each page.



#### Built-in optical character recognition (OCR)

The OCR simplifies editable and searchable scans.



#### Fast two-sided, single-pass scanning

Scan faster and more reliably with speeds up to 200 ipm<sup>5</sup> and an extended-life ADF that supports higher recommended monthly scan volumes.<sup>6</sup>



#### Large touchscreen control panel

Advanced imaging and processing options, including send to Microsoft SharePoint®, built-in OCR, auto-orientation, auto-page-crop, and auto-tone.<sup>7</sup>



#### Embedded HP EveryPage technology

Scan every page and detect potential errors or missed pages on the spot—even when the weight, size, or condition of pages varies.



#### Large pull-out keyboard for simplified data entry

Make scanned documents easier to organize and find by adding information to files and context to your email.



#### HP Quick Sets

Find the right document workflow every time, and run it correctly at the touch of a button. HP Quick Sets automates all the steps of a complicated workflow, on a full-color touchscreen that's easy to use.



## SECURITY

# The world's most secure printing<sup>8</sup>

Today, hackers have their eyes on businesses. The most destructive exploits are attacking networks through endpoint devices—and not just PCs, tablets, and smartphones. Networked printers are a new front line, vulnerable to attacks and security breaches. Hackers can intercept printing and imaging jobs traveling over the network from devices to printers, manipulate printer settings and functions from unsecured control panels, and access privileged data via unsecured USB or network ports.

The good news? HP saw it coming. We developed LaserJet Enterprise Managed MFPs and printers with embedded security features covering device, data, and document risks. These solutions change the equation—transforming networked printers from vulnerabilities to strongpoints.





### SECURE THE DEVICE

- HP SureStart monitors and maintains the BIOS
- Whitelisting helps protect the firmware
- Run-time intrusion detection keeps memory safe
- HP Connection Inspector stops suspicious network connections



### SECURE THE DATA

- Authentication helps block unauthorized access
- Encryption helps keep data safe



### SECURE THE DOCUMENT

- Workplace privacy and compliance through secure document workflows
- Anti-counterfeit tools deter tampering and fraud

## Easily manage security across the fleet

HP JetAdvantage Security Manager streamlines fleet management with policy-based print security compliance.<sup>11</sup> HP LaserJet Managed MFPs and printers can send printer event data to Security Information and Event Management (SIEM) tools for real-time threat monitoring.

For more information on HP printing security features, visit [hp.com/go/printersthatprotect](http://hp.com/go/printersthatprotect).

A close-up photograph of a white HP printer with a black control panel. A tablet is positioned in front of the printer, displaying the HP mobile interface. The interface includes the HP logo, a 'Reset' button, a home icon, and a green document icon labeled 'Cop'. The printer's keyboard is partially visible in the foreground.

## EXTENSIBILITY

# Forward-thinking adaptability

Technology, capabilities, and user expectations never stop evolving, and HP FutureSmart firmware and the HP Open Extensibility Platform (OXP) let your printers evolve as well.

### HP FutureSmart firmware

- Extends the life of the printer
- Offers consistency across your entire fleet via an intuitive interface
- Simplifies fleet-wide updates
- Allows your existing HP devices to be equipped with next-generation features<sup>12</sup>

### HP OXP

- Creates a unified environment for third-party software companies and enabled imaging and printing devices
- Integrates the third-party solutions you rely on today with your printer fleet tomorrow







## SOLUTIONS

# Focus on results

Help reduce costs, increase work efficiency, and accelerate business results with HP printing solutions. Help streamline information workflows by optimizing your IT infrastructures, managing your imaging and printing environments, and improving document-intensive processes.

### **Management and security**

Easily manage and optimize multi-vendor print environments and improve print application management.

**HP Web Jetadmin** allows you to remotely install, configure, troubleshoot, safeguard, and manage a wide variety of networked and PC-connected devices.<sup>13</sup>

**HP JetAdvantage Security Manager** offers an effective, policy-based approach to help secure HP printing and imaging devices.<sup>11</sup> Easily set security configuration policies and automatically validate settings for every HP printer and MFP in your fleet—saving you valuable IT time and resources.

**HP JetAdvantage Secure Print**<sup>14</sup> and **HP Access Control Print (HPAC)** help control costs and secure documents by requiring authentication to release print jobs. As a cloud-based solution, HP JetAdvantage Secure Print can simplify IT management activities and costs, while HPAC helps extend and customize your capabilities by integrating job accounting, managing rights, and establishing print policies for things such as color use.<sup>15</sup> Save IT time and make printing easy for the entire enterprise by using a single driver for all HP devices.<sup>16</sup>





### Mobility

Simple and secure mobile authentication and print. HP offers customers right-sized solutions for their business.

**HP Roam for Business** gives mobile workers a simpler way to print.<sup>17</sup> Users simply print to any HP Roam-enabled device—no need for a specific device driver, no need to be on the same network. Help avoid IT complexity and costly servers that take up office space or require ongoing attention or maintenance.

**HP PrinterOn Enterprise** helps connect virtually any desktop or mobile device to printers from multiple vendors both on and off the trusted network. The solution can be deployed on-premise or in a private cloud to meet the needs of your business. This secure enterprise cloud printing solution helps you print simply anywhere.

### Workflow

Align paper-based processes to your overall digital strategy.

**HP Workpath apps**<sup>18</sup> are transforming the capabilities of HP MFPs. Now you can have apps created or customized for your unique business needs. Workpath apps offer a variety of capabilities for streamlined digitization workflows and securing confidential information—while creating an intuitive user experience. Access personalized content and workflows with a single sign-on.

**HP Capture and Route** controls and tracks scanned content once it has been digitized and distributes it to its printing location.

**HP Digital Sending Software** allows users to route documents to email recipients, network folders, fax, FTP, a USB device, or Microsoft SharePoint®.<sup>19</sup>

**HP JetAdvantage Partner solutions** offer simple capture programs to sophisticated workflow automation. Current partners providing workflow solutions are Ephesoft Transact and YSoft SafeQ.



# Meet the HP LaserJet Managed MFPs and printers

The smart, secure way to grow your business

Our portfolio is versatile, to say the least. Grow your business with our extensive portfolio of MFPs and printers that offers more device choices from A3 to A4, innovative technologies, industry-leading security features,<sup>8</sup> and an overall improved user experience.

For more information on the latest HP LaserJet Managed MFPs and printers, visit [here](http://www8.hp.com/us/en/printers/a3-multifunction/managed-color-laserjet-printer.html).\*



Our latest LaserJet Managed MFPs and printers redefine excellence with game-changing LaserJet printing innovations:

Low operating cost per page (OCP) with long-life consumables and field-replaceable parts

Flow options on most models

More robust page volume and engine life (up to 100,000 pages RMPV<sup>20</sup>)

Larger and faster; up to 250-sheet ADF

HP FutureSmart printer firmware<sup>12</sup>

Flexible, modular paper handling and finishing for maximum productivity

Device-based sensing capabilities that monitor and diagnose many service needs

Smaller footprint than previous generation



# HP A3 LaserJet Managed portfolio



## Color A3

25 ppm price class		35 ppm price class			45 ppm price class			55 ppm price class	
<b>Color LaserJet Managed MFP E78223/E78228</b>	<b>Color LaserJet Managed MFP E78323/E78325</b>	<b>Color LaserJet Managed MFP M775</b>	<b>Color LaserJet Managed MFP E78330</b>	<b>Color LaserJet Managed MFP E87640/E87640du</b>	<b>Color LaserJet Managed MFP E75245</b>	<b>Color LaserJet Managed MFP E87650/E87650du</b>	<b>Color LaserJet Managed Flow MFP M880</b>	<b>Color LaserJet Managed E85055dn</b>	<b>Color LaserJet Managed MFP E87660/E87660du</b>
Up to 23/28 ppm <sup>21</sup>	Up to 23/25 ppm <sup>21</sup>	Up to 30 ppm <sup>21</sup>	Up to 30 ppm <sup>21</sup>	Up to 40 ppm <sup>21</sup>	Up to 45 ppm <sup>21</sup>	Up to 50 ppm <sup>21</sup>	Up to 45 ppm <sup>21</sup>	Up to 55 ppm <sup>21</sup>	Up to 60 ppm <sup>21</sup>
Up to 2,180 input <sup>22</sup>	Up to 3,140 input <sup>22</sup>	Up to 4,350 input <sup>22</sup>	Up to 3,140 input <sup>22</sup>	Up to 6,140 input <sup>22</sup>	Up to 4,450 input <sup>22</sup>	Up to 6,140 input <sup>22</sup>	Up to 4,100 input <sup>22</sup>	Up to 4,450 input <sup>22</sup>	Up to 6,140 input <sup>22</sup>
Up to 20,000 RMPV <sup>20</sup>	Up to 30,000 RMPV <sup>20</sup>	Up to 30,000 RMPV <sup>20</sup>	Up to 30,000 RMPV <sup>20</sup>	Up to 50,000 RMPV <sup>20</sup>	Up to 40,000 RMPV <sup>20</sup>	Up to 50,000 RMPV <sup>20</sup>	Up to 50,000 RMPV <sup>20</sup>	Up to 50,000 RMPV <sup>20</sup>	Up to 50,000 RMPV <sup>20</sup>

## HP A3 LaserJet accessories

Our A3 features go beyond the printed document. To deliver a truly professional printing experience, HP offers optional accessories to help you bind content together, feed multiple sizes of paper, and finish the job with clean staples and hole punches.





## Monochrome A3

25 ppm price class		35 ppm price class		45 ppm price class		55 ppm price class	60 ppm price class
<b>LaserJet Managed MFP E72425/ E72430</b>	<b>LaserJet Managed MFP E72525</b>	<b>LaserJet Managed MFP E72530/ E72535</b>	<b>LaserJet Managed MFP E82540 / E82540du</b>	<b>LaserJet Managed MFP M725</b>	<b>LaserJet Managed MFP E82550/ E82550du</b>	<b>LaserJet Managed MFP M830</b>	<b>LaserJet Managed MFP E82560/ E82560du</b>
Up to 25/30 ppm <sup>21</sup>	Up to 25 ppm <sup>21</sup>	Up to 30/35 ppm <sup>21</sup>	Up to 40 ppm <sup>21</sup>	Up to 40 ppm <sup>21</sup>	Up to 50 ppm <sup>21</sup>	Up to 55 ppm <sup>21</sup>	Up to 60 ppm <sup>21</sup>
Up to 2,180 input <sup>22</sup>	Up to 3,140 input <sup>22</sup>	Up to 3,140 input <sup>22</sup>	Up to 6,140 input <sup>22</sup>	Up to 4,600 input <sup>22</sup>	Up to 6,140 input <sup>22</sup>	Up to 4,600 input <sup>22</sup>	Up to 6,140 input <sup>22</sup>
Up to 40,000 RMPV <sup>20</sup>	Up to 50,000 RMPV <sup>20</sup>	Up to 50,000 RMPV <sup>20</sup>	Up to 100,000 RMPV <sup>20</sup>	Up to 40,000 RMPV <sup>20</sup>	Up to 100,000 RMPV <sup>20</sup>	Up to 100,000 RMPV <sup>20</sup>	Up to 100,000 RMPV <sup>20</sup>



2x520-sheet feeder



2,000-sheet high-capacity input



3,000-sheet side high-capacity input<sup>23</sup>



Inner finisher hole punch<sup>24</sup>



Stapler/stacker/hole punch<sup>25,26</sup>



Booklet finisher<sup>25,26</sup>

# HP A4 LaserJet Managed portfolio



## Color A4

25 ppm price class				45 ppm price class		55 ppm price class	
							
<b>Color LaserJet Managed E45028dn</b>	<b>Color LaserJet Managed MFP E47528f</b>	<b>Color LaserJet Managed E55040</b>	<b>Color LaserJet Managed MFP E57540</b>	<b>Color LaserJet Managed E65150dn</b>	<b>Color LaserJet Managed MFP E67650dh</b>	<b>Color LaserJet Managed E65160dn</b>	<b>Color LaserJet Managed Flow MFP E67660z</b>
Up to 29 ppm <sup>21</sup>	Up to 29 ppm <sup>21</sup>	Up to 40 ppm <sup>21</sup>	Up to 40 ppm <sup>21</sup>	Up to 50 ppm <sup>21</sup>	Up to 50 ppm <sup>21</sup>	Up to 60 ppm <sup>21</sup>	Up to 60 ppm <sup>21</sup>
Up to 850 input <sup>22</sup>	Up to 850 input <sup>22</sup>	Up to 2,300 input <sup>22</sup>	Up to 2,300 input <sup>22</sup>	Up to 3,200 input <sup>22</sup>	Up to 3,200 input <sup>22</sup>	Up to 3,200 input <sup>22</sup>	Up to 3,200 input <sup>22</sup>
Up to 7,500 RMPV <sup>20</sup>	Up to 7,500 RMPV <sup>20</sup>	Up to 15,000 RMPV <sup>20</sup>	Up to 15,000 RMPV <sup>20</sup>	Up to 24,000 RMPV <sup>20</sup>	Up to 24,000 RMPV <sup>20</sup>	Up to 30,000 RMPV <sup>20</sup>	Up to 30,000 RMPV <sup>20</sup>

## HP A4 LaserJet accessories

Add features to your HP A4 LaserJet Managed MFPs and printers for a customized user experience that fits your workplace needs.



# Monochrome A4

## 35 ppm price class



**LaserJet Managed E40040dn**

Up to 42 ppm (HP High Speed)<sup>21</sup>  
 Up to 900 input<sup>22</sup>  
 Up to 7,500 RMPV<sup>20</sup>



**LaserJet Managed MFP E42540f**

Up to 42 ppm (HP High Speed)<sup>21</sup>  
 Up to 900 input<sup>22</sup>  
 Up to 7,500 RMPV<sup>20</sup>



**LaserJet Managed E50145dn**

Up to 52 ppm (HP High Speed)<sup>21</sup>  
 Up to 2,300 input<sup>22</sup>  
 Up to 15,000 RMPV<sup>20</sup>



**LaserJet Managed MFP E52645**

Up to 52 ppm (HP High Speed)<sup>21</sup>  
 Up to 2,300 input<sup>22</sup>  
 Up to 15,000 RMPV<sup>20</sup>

## 55 ppm price class



**LaserJet Managed E60155dn**

Up to 55 ppm<sup>21</sup>  
 Up to 4,400 input<sup>22</sup>  
 Up to 30,000 RMPV<sup>20</sup>



**LaserJet Managed MFP E62655dn**

Up to 55 ppm<sup>21</sup>  
 Up to 3,750 input<sup>22</sup>  
 Up to 40,000 RMPV<sup>20</sup>

## 65+ ppm price class



**LaserJet Managed E60165dn**

Up to 65 ppm<sup>21</sup>  
 Up to 4,400 input<sup>22</sup>  
 Up to 40,000 RMPV<sup>20</sup>



**LaserJet Managed MFP E62665**

Up to 65 ppm<sup>21</sup>  
 Up to 3,750 input<sup>22</sup>  
 Up to 40,000 RMPV<sup>20</sup>



**LaserJet Managed E60175dn**

Up to 75 ppm<sup>21</sup>  
 Up to 4,400 input<sup>22</sup>  
 Up to 50,000 RMPV<sup>20</sup>



550-sheet feeder



Printer stand and cabinet



500-sheet feeder and cabinet



2,500-sheet HCI and stand



Stapler/stacker/mailbox

# HP Color LaserJet A3 Managed

	Color LaserJet Managed E75245	Color LaserJet Managed MFP E78223 / MFP E78228	Color LaserJet Managed MFP E78323 / MFP E78325	Color LaserJet Managed MFP E78330	Color LaserJet Managed MFP E87640	Color LaserJet Managed MFP M775	Color LaserJet Managed MFP E87650	Color LaserJet Managed Flow MFP M880	Color LaserJet Managed E85055	Color LaserJet Managed MFP E87660
<b>Product number</b>	E75245dn: T3U64A	E78223dn: 8GS14A; E78228dn: 8GS15A	MFP E78323dn: 8GR95A or Z2645AW; Flow MFP E78323z: 8GR99A or 17F15AW; MFP E78325dn: 8GR96A or Z2646AW; Flow MFP E78325z: 8GS00A or 17F16AW	MFP E78330dn: 8GR97A or Z2647AW; Flow MFP E78330z: 8GS01A or 17F17AW	E87640du: 5CM64A E87640dn: X3A87A or Z8Z12A Flow E87640z: X3A86A or Z8Z13A	M775fm: L3U49A M775zm: L3U50A	E87650du: 5CM65A E87650dn: X3A90A or Z8Z14A Flow E87650z: X3A89A or Z8Z15A	Flow M880zm: L3U51A Flow M880zm+: L3U52A	E85055dn: T3U66A	E87660du: 5CM66A E87660dn: X3A93A or Z8Z16A Flow E87660z: X3A92A or Z8Z17A
<b>Control panel</b>	2.7-inch (6.9 cm) color graphic display with 24-key pad	9.0-inch (22.8 cm) functional touchscreen with 8.0-inch (20.3 cm) color graphics display	9.0-inch (22.8 cm) functional touchscreen with 8.0-inch (20.3 cm) color graphics display; Flow models: pull-out keyboard		8.0-inch (20.3 cm) color touchscreen	9.0-inch (22.8 cm) functional touchscreen with 8.0-inch (20.3 cm) color graphics display; Flow models: pull-out keyboard	8.0-inch (20.3 cm) color touchscreen; pull-out keyboard	4.3-inch (10.9 cm) color graphics display with touchscreen	9.0-inch (22.8 cm) functional touchscreen with 8.0-inch (20.3 cm) color graphics display; Flow model: pull-out keyboard	
<b>Print speed (letter and A4)<sup>21</sup></b>	Up to 45 ppm, letter (46 ppm, A4)	E78223: Up to 23 ppm E78228: Up to 28 ppm	E78323: Up to 23 ppm E78325: Up to 25 ppm	Up to 30 ppm	Up to 40 ppm	Up to 30 ppm	Up to 50 ppm	Up to 45 ppm, letter (46 ppm, A4)	Up to 55 ppm, letter (56 ppm, A4)	Up to 60 ppm
<b>Input<sup>22</sup></b>	650 to 4,450 sheets	1,140 to 2,180 sheets	1,140 to 3,140 sheets		1,140 to 6,140 sheets	1,350 to 4,350 sheets	1,140 to 6,140 sheets	2,100 to 4,100 sheets	650 to 4,450 sheets	1,140 to 6,140 sheets
<b>RMPV<sup>20</sup></b>	Up to 40,000 pages	Up to 20,000 pages	Up to 30,000 pages	Up to 30,000 pages	Up to 50,000 pages	Up to 30,000 pages	Up to 50,000 pages	Up to 50,000 pages	Up to 50,000 pages	Up to 50,000 pages



## HP Monochrome LaserJet A3 Managed

	LaserJet Managed MFP E72425/ MFP E72430	LaserJet Managed MFP E72525/ MFP E72530	LaserJet Managed MFP E72535	LaserJet Managed MFP E82540	LaserJet Managed MFP M725	LaserJet Managed MFP E82550	LaserJet Managed MFP M830	LaserJet Managed MFP E82560
<b>Product number</b>	E72425dn: 5CM71A E72430dn: 5CM72A	E72525dn: X3A60A or Z8Z06A; Flow E72525z: X3A59A or Z8Z07A E72530dn: X3A63A or Z8Z08A; Flow E72530z: X3A62A or Z8Z09A	E72535dn: X3A66A or Z8Z10A; Flow E72535z: X3A65A or Z8Z11A	E82540du: 5CM59A; E82540dn: X3A69A or Z8Z18A; Flow E82540z: X3A68A or Z8Z19A	M725dnm: L3U63A M725zm: L3U64A	E82550du: 5CM60A; E82550dn: X3A72A or Z8Z20A; Flow E82550z: X3A71A or Z8Z21A	Flow M830zm: L3U65A	E82560du: 5CM61A; E82560dn: X3A75A or Z8Z22A; Flow E82560z: X3A74A or Z8Z23A
<b>Control panel</b>	9.0-inch (22.8 cm) functional touchscreen with 8.0-inch (20.3 cm) color graphics display	9.0-inch (22.8 cm) functional touchscreen with 8.0-inch (20.3 cm) color graphics display; Flow models: pull-out keyboard			8.0-inch (20.3 cm) color touchscreen	9.0-inch (22.8 cm) functional touchscreen with 8.0-inch (20.3 cm) color graphics display; Flow model: pull-out keyboard	8.0-inch (20.3 cm) color touchscreen; Flow model: pull-out keyboard	9.0-inch (22.8 cm) functional touchscreen with 8.0-inch (20.3 cm) color graphics display; Flow model: pull-out keyboard
<b>Print speed (letter and A4)<sup>21</sup></b>	E72425: Up to 25 ppm E72430: Up to 30 ppm	E72525: Up to 25 ppm E72530: Up to 30 ppm	Up to 35 ppm	Up to 40 ppm	Up to 40 ppm, letter (41 ppm, A4)	Up to 50 ppm	Up to 55 ppm	Up to 60 ppm
<b>Input<sup>22</sup></b>	1,140 to 2,180 sheets	1,140 to 3,140 sheets			1,140 to 6,140 sheets	600 to 4,600 sheets	1,140 to 6,140 sheets	4,600 sheets
<b>RMPV<sup>20</sup></b>	Up to 40,000 pages	Up to 50,000 pages	Up to 50,000 pages	Up to 100,000 pages	Up to 40,000 pages	Up to 100,000 pages	Up to 100,000 pages	Up to 100,000 pages

## HP Color LaserJet A4 Managed

	Color LaserJet Managed E45028dn	Color LaserJet Managed MFP E47528f	Color LaserJet Managed E55040	Color LaserJet Managed MFP E57540	Color LaserJet Managed E65150	Color LaserJet Managed E65160	Color LaserJet Managed MFP E67650	Color LaserJet Managed MFP E67660
Product number	E45028dn: 3QA35A	E47528f: 3QA75A	E55040dn: 3GX99A E55040dw: 3GX98A	E57540dn: 3GY25A Flow E57540c: 3GY26A	E65150dn: 3GY03A	E65160dn: 3GY04A	E67650dh: 3GY31A	Flow E67660z: 3GY32A
Control panel	2.7-inch (6.9 cm) color graphics display	4.3-inch (10.9 cm) color touchscreen	4.3-inch (10.9 cm) color touchscreen	8.0-inch (20.3 cm) color touchscreen; Flow model: pull-out keyboard	4.3-inch (10.9 cm) icon-based color touchscreen	4.3-inch (10.9 cm) icon-based color touchscreen	8.0-inch (20.3 cm) color touchscreen	8.0-inch (20.3 cm) color touchscreen; pull-out keyboard
Print speed (letter/A4) <sup>21</sup>	Up to 29/27 ppm		Up to 40/40 ppm		Up to 50/47 ppm	Up to 60/56 ppm	Up to 50/47 ppm	Up to 60/56 ppm
Input <sup>22</sup>	300 to 850 sheets		650 to 2,300 sheets		Up to 3,200 sheets	Up to 3,200 sheets	Up to 3,200 sheets	Up to 3,200 sheets
RMPV <sup>20</sup>	Up to 7,500 pages		Up to 15,000 pages		Up to 24,000 pages	Up to 30,000 pages	Up to 24,000 pages	Up to 30,000 pages

## HP Monochrome LaserJet A4 Managed

	LaserJet Managed E40040dn	LaserJet Managed MFP E42540f	LaserJet Managed E50145	LaserJet Managed MFP E52645	LaserJet Managed E60155	LaserJet Managed E60165	LaserJet Managed E60175	LaserJet Managed MFP E62655	LaserJet Managed MFP E62665
Product number	E40040dn: 3PZ35A	E42540f: 3PZ75A	E50145dn: 1PU51A	E52645dn: 1PS54A Flow E52645c: 1PS55A	E60155dn: 3GY09A	E60165dn: 3GY10A	E60175dn: 3GY12A	E62655dn: 3GY14A	E62665hs: 3GY15A Flow E62665h: 3GY16A Flow E62665z: 3GY17A
Control panel	2.7-inch (6.9 cm) color graphics display	4.3-inch (10.9 cm) color touchscreen	4.3-inch (10.9 cm) color touchscreen	8.0-inch (20.3 cm) color touchscreen; Flow model: pull-out keyboard	4.3-inch (10.9 cm) color touchscreen			8.0-inch (20.3 cm) color touchscreen; Flow models: pull-out keyboard	
Print speed (letter/A4) <sup>21</sup>	Up to 42/40 ppm (HP High Speed)		Up to 52/50 ppm (HP High Speed)		Up to 55/52 ppm	Up to 65/61 ppm	Up to 75/71 ppm	Up to 55/52 ppm	Up to 65/61 ppm
Input <sup>22</sup>	350 to 900 sheets		650 to 2,300 sheets		Up to 4,400 sheets			Up to 3,750 sheets	
RMPV <sup>20</sup>	Up to 7,500 pages		Up to 15,000 pages		Up to 30,000 pages	Up to 40,000 pages	Up to 50,000 pages	40,000 pages	



## Optional LaserJet A3 input and finishing accessories

Devices	Compatible accessories
LaserJet Managed MFP E72425dn, MFP E72430dn	Input: 2x520-sheet feeder (Y1F97A), cabinet (Y1G17A) Output: Inner finisher (Y1G00A), <sup>24</sup> inner finisher with 2/3 hole punch (Y1G02A), inner finisher staples (Y1G13A), job separator (Y1G15A), tray heater (Y1G22A), second exit (Y1G23A)
Color LaserJet Managed E75245dn, E85055dn	Input: 550-sheet feeder (T3V27A), stand (T3V28A), 2x550-sheet feeder and stand (T3V29A), 2,700-sheet high-capacity input and stand (T3V30A) Output: Not applicable
Color LaserJet Managed MFP E78223dn, MFP E78228dn	Input: Cabinet and stand (Y1G17A), dual cassette feeder and stand (Y1F97A) Output: Inner finisher (Y1G00A), <sup>24</sup> inner finisher 2/3 hole punch (Y1G02A), tray heater (Y1G22A), inner finisher staples (Y1G13A), job separator (Y1G15A), second exit (Y1G23A)
LaserJet Managed MFP E72525, MFP E72530, MFP E72535; Color LaserJet Managed MFP E78323, MFP E78325, MFP E78330	Input: 2x520-sheet feeder (Y1F97A), cabinet (Y1G17A), 2,000-sheet high-capacity input (Y1F99A) Output: Inner finisher (Y1G00A), <sup>24</sup> inner finisher with 2/3 hole punch (Y1G02A), inner finisher with 2/4 hole punch (Y1G03A), inner finisher with Swedish Hole Punch (Y1G04A), stapler/stacker finisher (Y1G18A), <sup>25,26</sup> booklet finisher (Y1G07A), <sup>25,26</sup> 2/3 hole punch (Y1G10A), 2/4 hole punch (Y1G11A), Swedish hole punch (Y1G12A), job separator (Y1G15A), tray heater (Y1G22A), second exit (Y1G23A), spacer (Y1G24A)
LaserJet Managed MFP E82540, MFP E82540du, MFP E82550, MFP E82550du, MFP E82560, MFP E82560du; Color LaserJet Managed MFP E87640, MFP E87640du, MFP E87650, MFP E87650du, MFP E87660, MFP E87660du	Input: 2 x 520-sheet feeder (Y1F98A), cabinet (Y1G16A), 2,000-sheet high-capacity input (Y1G21A), 3,000-sheet side high-capacity input (Y1G20A) Output: Inner finisher (Y1G00A), inner finisher with 2/3 hole punch (Y1G02A), inner finisher with 2/4 hole punch (Y1G03A), inner finisher with Swedish Hole Punch (Y1G04A), stapler/stacker finisher (Y1G18A), booklet finisher (Y1G07A), 2/3 hole punch (Y1G10A), 2/4 hole punch (Y1G11A), Swedish Hole Punch (Y1G12A), job separator (Y1G01A), tray heater (Y1G22A)
LaserJet Managed MFP M725	Input: 500-sheet feeder (CF239A), 1x500-sheet feeder, cabinet, and stand (CF243A), 3x500-sheet feeder and stand (CF242A), 3,500-sheet HCI and stand (CF245A) Output: Not applicable
Color LaserJet Managed MFP M775	Input: 500-sheet feeder (CE860A), 1x500-sheet feeder with cabinet (CE792A), 3x500-sheet feeder and stand (CE725A), 3,500-sheet HCI and stand (CF305A) Output: Not applicable
LaserJet Managed MFP M830	Input: 3x500-sheet feeder and stand (C1N63A), 3,500-sheet HCI and stand (C1N64A) Output: Booklet maker/finisher (CZ285A), stapler/stacker (CZ994A), stapler/stacker with 2/3 hole punch (CZ995A)
Color LaserJet Managed MFP M880	Input: 3x500-sheet feeder and stand (C1N63A), 3,500-sheet HCI and stand (C1N64A) Output: Booklet maker/finisher with 2/3 hole punch (A2W84A), stapler/stacker (A2W80A), stapler/stacker with 2/4 hole punch (A2W82A), booklet maker/finisher (A2W83A), booklet maker/finisher with 2/4 hole punch (CZ999A)

## Optional LaserJet A4 input and finishing accessories

Devices	Compatible accessories
LaserJet Managed E50145 LaserJet Managed MFP E52645	Input: 550-sheet feeder (F2A72A), printer stand and cabinet (F2A73A) Output: Not applicable
Color LaserJet Managed E55040 Color LaserJet Managed MFP E57540	Input: 550-sheet feeder (B5L34A), printer stand and cabinet (B5L51A) Output: Not applicable
LaserJet Managed E60155dn LaserJet Managed E60165dn LaserJet Managed E60175dn	Input: 550-sheet paper feeder (LOH17A), 2,100-sheet paper feeder (LOH18A), envelope feeder (LOH21A), printer stand (LOH19A) Output: Stapler/stacker/mailbox (LOH20A)
Color LaserJet E65150dn Color LaserJet E65160dn Color LaserJet Managed MFP E67650dh Color LaserJet Managed Flow MFP E67660z	Input: 1x550-sheet paper feeder (P1B09A), 1x550-sheet paper feed with stand and cabinet (P1B10A), 3x550-sheet paper feeder and stand (P1B11A), 1x550- and 2,000-sheet HCI feeder and stand (P1B12A) Output: Not applicable
LaserJet Managed MFP E62655dn LaserJet Managed MFP E62665	Input: 550-sheet paper feeder (J8J89A), 1x550-sheet paper feeder with stand and cabinet (J8J91A), 3x550-sheet paper feeder and stand (J8J93A), 1x550 and 2,000-sheet HCI feeder and stand (J8J92A), envelope feeder (J8J90A) Output: Not applicable
LaserJet Managed E40040dn LaserJet Managed MFP E42540f	Input: 550-sheet feeder tray (D9P29A) Output: Not applicable
Color LaserJet Managed E45028dn Color LaserJet Managed MFP E47528f	Input: 550-sheet feeder tray (CF404A) Output: Not applicable



# HP Financial Services

HP Financial Services (HPFS) can help you deliver a complete LaserJet print solution to your customer and accelerate their transition to new HP technology, while allowing them to preserve budget for other priorities. As the preferred HP financing partner, HPFS has flexible financing solutions to meet your customer's unique business needs.<sup>27</sup>

1. Compared to previous generations of laser printers. 2. Fewer service parts claim based on BLI analysis of leading in-class A3 MFPs as of August 2016; calculations use publicly available and/or published manufacturer rated yields for long-life consumables and assume 600,000 pages printed (using a 60% black/40% color ratio); market share as reported by IDC as of Q2 2016. 3. Average declared yields based on ISO/IEC 19798 and continuous printing. Actual yields vary considerably based on images printed and other factors. For details, see [hp.com/go/tonervield](http://hp.com/go/tonervield). 4. Flow MFP bundles not available for all models. See pages 20 through 22 for more information. 5. Scan speeds measured from ADF. Actual processing speeds may vary depending on scan resolution, network conditions, computer performance, and application software. 6. HP recommends that the number of scanned pages per month be within the stated range for optimum device performance, based on factors including supplies replacement intervals and device life over an extended warranty period. 7. Requires an Internet connection to the printer. Services may require registration. App availability varies by country, language, and agreements. For details, see [hpconnected.com](http://hpconnected.com). 8. HP's most advanced embedded security features are available on HP Managed and Enterprise devices with HP FutureSmart firmware 4.5 or above. Claim based on HP review of 2019 published features of competitive in-class printers. Only HP offers a combination of security features to automatically detect, stop, and recover from attacks with a self-healing reboot, in alignment with NIST SP 800-193 guidelines for device cyber resiliency. For a list of compatible products, visit [hp.com/go/PrintersThatProtect](http://hp.com/go/PrintersThatProtect). For more information, visit [hp.com/go/printersecurityclaims](http://hp.com/go/printersecurityclaims). 9. Five billion records: 2018 Year End Data Breach QuickView Report by Risk Based Security / Cyber Risk Analytics, <https://pages.riskbasedsecurity.com/2018-ye-breach-quickview-report>, February 2019. 10. Quocirca Global Print Security Study, Louella Fernandes, January 2019. 11. HP JetAdvantage Security Manager must be purchased separately. To learn more, please visit [hp.com/go/securitymanager](http://hp.com/go/securitymanager). 12. Some features enabled by future HP FutureSmart upgrades may not be available on older devices if, for example, physical product characteristics limit the functionality of the new feature. 13. HP Web Jetadmin is available for download at no additional charge at [hp.com/go/wja](http://hp.com/go/wja). 14. HP JetAdvantage Secure Print works with most network-connected printers and MFPs. On-device authentication requires HP FutureSmart firmware 4.8 or newer. Supported card readers include X3D03A (HP USB Universal Card Reader) and Y7C05A (HP HIP2 Keystroke Reader). Internet connection required. For more information, see [hp.com/go/jetadvantagesecureprint](http://hp.com/go/jetadvantagesecureprint). 15. Color access control capabilities vary from device to device. 16. The HP Universal Print Driver is available for download at no additional charge at [hp.com/go/upd](http://hp.com/go/upd). 17. Subscription or accessory may be required. For more information, visit [hp.com/go/roam](http://hp.com/go/roam). To enable HP Roam for Business, some devices may require firmware to be upgraded and an optional accessory to add Bluetooth Low Energy (BLE) beaconing capabilities. Customer can purchase the HP Jetdirect 3100w BLE/NFC/Wireless accessory or the RadBeacon USB. 18. Not all MFPs may be compatible with Workpath apps. Not all apps may be available in all locations. For more information about HP Workpath apps, see <http://h20195.www2.hp.com/v2/GetDocument.aspx?docname=4AA7-3703ENW>. For a list of compatible products, see <http://h20195.www2.hp.com/v2/GetPDF.aspx/4aa7-3587enw.pdf>. 19. Requires an Internet connection to the printer. Services may require registration. App availability varies by country, language, and agreements. For details, see [hpconnected.com](http://hpconnected.com). 20. Recommended Monthly Page Volume: HP recommends that the number of printed pages per month be within the stated range for optimum device performance, based on factors including supplies replacement intervals and device life over an extended warranty period. 21. Print speed measured using ISO/IEC 24734 Office Suite and Feature Tests, excludes first set of test documents. For more information, see [hp.com/go/printerclaims](http://hp.com/go/printerclaims). Exact speed varies depending on the system configuration, software application, driver, document complexity, media size, media orientation, and media type. HP High Speed may require a firmware upgrade to enable. 22. Maximum input capacity may require purchase of additional optional input accessory. 23. Only available on the E80000 series. 24. Purchase of the Inner Finisher (Y1G00A) for the LaserJet Managed MFP E72425dn, MFP E72430dn, MFP E72525, MFP E72530, MFP E72535 or Color LaserJet Managed MFP E78223dn, MFP E78228dn, MFP E78323, MFP E78325, MFP E78330 also requires purchase of Second Exit (Y1G23A). 25. Purchase of the Booklet Finisher (Y1G07A) or Stapler/Stacker Finisher (Y1G18A) for the LaserJet Managed MFP E72525, MFP E72530, or MFP E72535 also requires purchase of Second Exit (Y1G23A) and Spacer (Y1G24A). 26. Purchase of the Booklet Finisher (Y1G07A) or Stapler/Stacker Finisher (Y1G18A) for the Color LaserJet Managed MFP E78323, MFP E78325, or MFP E78330 also requires purchase of Second Exit (Y1G23A). 27. Financing and service offerings available through Hewlett-Packard Financial Services Company and its subsidiaries and affiliates (collectively HPFSC) in certain countries and is subject to credit approval and execution of standard HPFSC documentation. Rates and terms are based on customer's credit rating, offering types, services and/or equipment type and options. Not all customers may qualify. Not all services or offers are available in all countries. Other restrictions may apply.

© Copyright 2019–2020 HP Development Company, L.P. The information contained herein is subject to change without notice. The only warranties for HP products and services are set forth in the express warranty statements accompanying such products and services. Nothing herein should be construed as constituting an additional warranty. HP shall not be liable for technical or editorial errors or omissions contained herein. Printed in the United States.

Microsoft and SharePoint are registered trademarks of Microsoft Corporation in the United States and/or other countries.

4AA7-0669ENUC, October 2020, Rev. 3